

MonacoDCcolor

Boost Color Accuracy With Digital Camera Profiling

Boost Color Accuracy With Digital Camera Profiling

MonacoDCcolor is the ideal digital camera profiling solution, created with professional photographers in mind. Profiling your digital camera allows you to seamlessly integrate digital shots into your ICC color-managed workflow. MonacoDCcolor works in conjunction with industry standard targets, which have been specifically developed for use with digital cameras to produce the highest quality digital camera profiles available.

Digital camera profiling ensures that digital captures will look their best and match your scene colors. As a result, you will spend less time retouching images to recover the original colors. MonacoDCcolor is the perfect accompaniment to any color managed workflow that already includes monitor and output profiling.



How it works:

Step 1: In a studio setting, set up your scene. Place the input target in a central location within the scene, so that its position is parallel to the camera's film back.

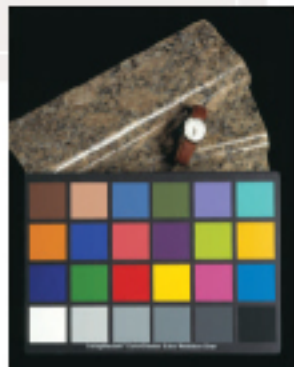
Step 2: Configure the camera so that the input target fills the viewfinder and capture the target. Save the cropped target as a TIFF file.

Step 3: Open the image in MonacoDCcolor, crop the target, and create the profile.

Step 4: Use the profile statistics to determine the camera profile quality and make any appropriate adjustments to the camera settings to improve profile results.

Step 5: Now save the profile and begin shooting with confidence!

Use MonacoDCcolor in a studio setting for best results. Your lighting conditions must be carefully controlled in order to ensure the accuracy of your profile.



MonacoDCcolor

Boost Color Accuracy With Digital Camera Profiling

Features and Benefits:

- Creates ICC profiles for digital cameras
- Allows digital cameras to capture color accurately, reducing the need for image retouching
- Simplifies the profiling process with a wizard-like interface; digital camera profiles can be built in less than 5 minutes!
- Intelligent algorithms determine the optimum profile for your digital camera
- Automatic color balancing and compensating for uneven color target illumination
- Provides statistical information about the color performance of your camera



Capture

Once you've captured the color target in your studio, simply load it into MonacoDCcolor and let the software analyze your camera's color performance.

Target Cropping

Click on each of the four camera target crop marks, give the profile a name, and you're ready to build your new digital camera profile!



Profile Statistics

After creating the profile, MonacoDCcolor provides statistics to evaluate the quality of your profile. For optimum profiling, make sure your target is evenly lit and all automatic color corrections and color management options are turned off in your camera.

Macintosh® OS X

- Power Macintosh or better
- Macintosh System 10.1.4 or later
- 256 MB system RAM, 100 MB free disk space
- Color Monitor with 24-bit or greater video card (with LUT support)
- USB port

Windows

- Pentium® PC or better
- Windows 98SE/ME/2000/XP
- 128MB application RAM, 100MB free disk space
- Color Monitor with 24-bit or greater video card (with LUT support)
- USB port

Macintosh OS 9.1 - 9.x

- Power Macintosh or better
- 180 MB application RAM, 100 MB free disk space
- Color Monitor with 24-bit or greater video card (with LUT support)
- USB port

Target Support

- GretagMunsell® ColorChecker™
- GretagMunsell® ColorChecker™ DC
- Reflective HitzhColor target (HCT)



Embrace
Color
Excellence