



HP Designjet Z2100 Photo Printer series

Print the truth—experience it in accurate, consistent and lasting 8-ink colour



Consistent colour that produces results

Technology for precise colour matching

Make use of the industry's first-ever embedded spectrophotometer¹ to revolutionise professional colour workflow, enabling predictable results from printer-to-printer and print-to-print. A complete printer calibration and profiling process takes just a few minutes, saving you time and money.

Profiles make consistent printing easier

The HP Color Center tool utility takes you through a simple, step-by-step process so you can create ICC profiles automatically, for consistent, dependable colour. Take control and eliminate the need for predefined profiles. Generate custom ICC profiles for your preferred paper, so that you can express your vision on even more HP and commercially available papers.

Complete coverage for industry standards

Full coverage of SWOP, ISO, GRACOL, EUROSACLE, TOYO, FOGRA and 3DAP gamuts ensures your prints are coloured precisely the way you designed.

Reliable, long-lasting prints that inspire confidence

Superior fade and water-resistance

Achieve prints that combine outstanding quality with fade and water-resistance on a range of HP creative and specialty papers. Your creative works will remain as fresh and new as the day they were printed, thanks to HP Vivera pigment inks that resist fading for over 200 years².

Professional colour tools

HP Print Preview gives you an accurate picture of how your print will appear on the sheet or roll of paper you have loaded. Settings such as colour, scaling, mirroring and orientation can be quickly and accurately checked, to avoid layout by trial and error, and save ink and media. When you send a print job, rely on HP Alerts in the driver to inform you if the printer is switched on and if the selected paper is correctly loaded, ensuring the best possible print quality.

Amazing results for your personal creative canvas

A wide range of colours

With HP 70 Vivera pigment inks designed specifically for it, the 8-ink printing system in this HP Designjet is over 80%³ successful in simulating PANTONE[®] colours, producing vivid, high-quality colour that stands out.

A wide range of printing choices

Impressive results will be the norm with this large-format HP Designjet that can print bordered or borderless⁴ on a variety of HP creative and specialty media, up to 44 inches wide. The HP Designjet Z2100 Photo Printer supports paper thickness between 0.1 and 0.8 mm, with cut sheet and roll feed options.

A wide range of neutral tones

The HP Three-Black ink set consists of matte black, photo black and light grey HP Vivera pigment ink cartridges that reside in the printer at all times. You can print images on matte and glossy papers without swapping ink cartridges or wasting time and ink every time the printer is reconfigured.

Manage and maintain, without hassle

HP Easy Printer Care/HP Printer Utility software puts greater control in your hands. Monitor the status of supplies, get the latest updates, and configure desktop alerts and automatic updates for your HP Designjet Z2100 Photo Printer. And with the Optical Drop Detector (ODD), automatic nozzle testing is a fast, economical and convenient way of ensuring dependable performance from every nozzle on the HP 70 Printheads.

¹ With i1 colour technology.

² Display permanence rating by Wilhelm Imaging Research, Inc. on a range of HP creative and specialty media. For details: <http://www.hp.com/go/supplies/printpermanence>

³ HP's preliminary, internal results have shown that the HP Designjet Z Photo Printer series is capable of successfully simulating over 80% of the PANTONE colours. HP Designjet Z2100 and Z3100 Photo Printers are pending PANTONE licensing.

⁴ Borderless printing is only possible on glossy roll media, not on a range of papers and cut-sheets.

Why HP Designjet Z2100 Photo Printer series?



For graphic designers—conceptualise in high-impact colour, easily and efficiently

Create high-impact proofs with professional prints and flexible media choice

8-ink printing system with HP Vivera pigment inks produces high-quality colour and black and white prints that bring your ideas and creativity to life on a wide range of media. Expect greater creative flexibility when creating proofs.

Seamless workflow lets designers focus on design

HP print drivers allow real-time layout and orientation previewing, saving time, effort and resources spent in trial and error printing. The included HP ProPrint Plug-in, co-designed by HP and Adobe, gives designers working in Photoshop® the expected colours when printing. For even greater control, the optional EFI Designer Edition 5.1 for HP seamlessly integrates with HP Designjet Printers to allow CMYK workflows, Postscript and PDF printing, and accurate spot colour management.



Comprehensive driver options, such as real-time previewing



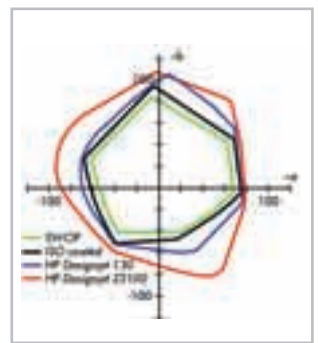
For prepress specialists—get fast, efficient profiling and accurate colours

Complete coverage of press-standard gamuts

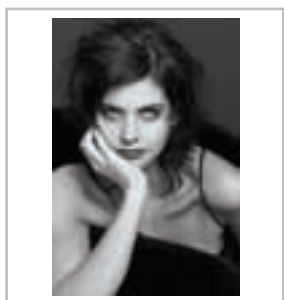
With 8 individual inks, the HP Designjet Z2100 Photo Printer series completely covers the SWOP, ISO, GRACOL, EUROSCALE, TOYO, FOGRA and 3DAP gamuts.

Automated processes boost productivity and streamline workflow

Colour accuracy gets a boost with fast, automated ICC profile generation, enabled by the embedded spectrophotometer¹ that features GretagMacbeth's i1 colour technology. In addition, it also makes closed-loop colour calibration accurate, fast and efficient.



Embedded spectrophotometer, the first of its kind



For social wedding photographers—get professional, long-lasting photographs

Get both vivid, realistic colour and striking black and white prints

8 individual HP Vivera pigment inks bring your visions to life, just the way you pictured. The HP Three-Black ink set further enhances black and white printing with true neutral tones and deep, rich blacks.

Photographs that last

Not only do HP Vivera pigment inks deliver amazing image quality, they also resist fading for over 200 years².



HP Vivera pigment inks for long-lasting prints



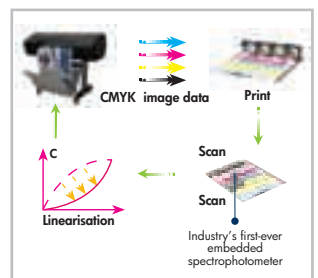
For GIS specialists—get accurate, consistent colour with a wide gamut

Wider gamut for excellent colour definition

With the wider gamut enabled by 8 individual HP Vivera pigment inks, colours have better definition and differentiation.

Accurate, consistent colour means accurate consistent maps

Automatic closed-loop colour calibration with the embedded spectrophotometer¹ helps to ensure accurate colour, that's consistent for every map you print.



Closed loop colour calibration makes accurate and consistent prints possible

© Neil Snape/Roxane

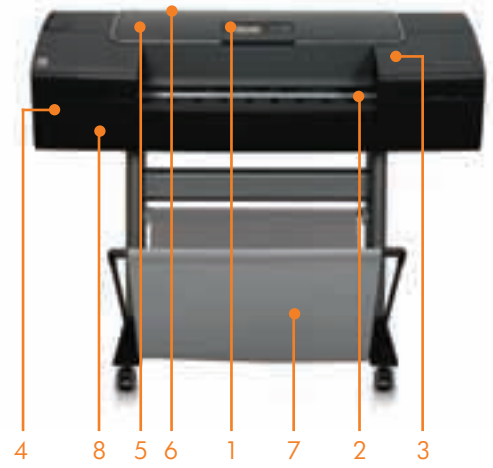
© ESRI

¹ With i1 colour technology.

² Display permanence rating by Wilhelm Imaging Research, Inc. on a range of HP creative and specialty media. For details: <http://www.hp.com/go/supplies/printpermanence>

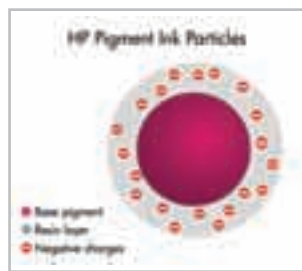
HP Designjet Z2100 Photo Printer series

- 1 Direct access keys and LCD printer status indicator for ink supply maintenance and print message alerts
- 2 Front bypass slot accommodates media up to 609 mm/24 inches wide (24-inch printer) or up to 1117.6 mm/44 inches wide (44-inch printer)
- 3 Embedded spectrophotometer¹ brings accurate profiling and precision colour calibration
- 4 USB 2.0 High Speed and 10/100 BT Ethernet connection for TCP/IP. Optional network connectivity with 1 EIO HP Jetdirect slot
- 5 Rear bypass slot handles heavy and rigid media of weight up to 500 g/m² and thickness up to 0.8 mm
- 6 Roll feed handles rolls up to 609 mm/24 inches wide (24-inch printer) or up to 1117.6 mm/44 inches wide (44-inch printer) and 9140 mm/359.8 inches long
- 7 Media bin (optional)
- 8 8-ink printing system with 4 pl and 6 pl drop size that resist fading for over 200 years²



KEY TECHNOLOGIES

HP Viverra pigment inks offer outstanding image quality and fade resistance on a wide variety of photo and fine art media, along with water resistance on a range of HP creative and specialty media. HP's proprietary Electrosteric Encapsulation Technology optimises the pigment chemistry and ink properties for stability and performance to ensure a broad colour gamut, print permanence, excellent gloss uniformity, and reliable, accurate, and consistent printing.



Electrosteric Encapsulation Technology

HP's 8-ink printing system that is made up of the exclusive HP Viverra pigment ink formulation technology and the HP Three-Black ink set, ensures exceptional colour and accuracy and consistency; a valuable tool for graphic designers and prepress professionals who need repeatable results.



The HP embedded spectrophotometer with i1 Colour Technology from GretagMacbeth™ is mounted on the printer carriage and revolutionises professional colour workflows by automating media profiling. It allows users to automatically generate custom RGB ICC profiles for their preferred media and provides accurate measurements for printer calibration that delivers print-to-print and printer-to-printer colour consistency. Also, with the optional HP Advanced Profiling Solution, you can edit and modify existing profiles and create CMYK profiles.



An extensive media portfolio³: HP offers a portfolio of 9 photo papers, 10 digital fine art papers, 3 proofing papers, 9 bond and coated papers, and over 30 other HP media. All have been tested with HP 70 Viverra pigment inks to deliver consistent, museum-quality prints that withstand the demands of handling, display and storage expected of professional prints.



OPTIONAL ACCESSORIES

The HP-GL/2 Upgrade Kit improves line quality and network availability with the HP-GL/2 software key. The printer, rather than the computer, processes files for improved operating efficiency. Store and reprint files from the printer queue and print legacy HP-GL/2 files.



The EFI Designer Edition 5.1 XL for HP is a powerful, yet cost effective digital proofing system that allows full control over digital proofing needs. Together, EFI and HP enable designers, photographers and other creative professionals to easily generate proof-quality prints with sharp detail, colour accuracy and smooth tonal transitions.



The HP Advanced Profiling Solution powered by GretagMacbeth™ technology, offers a powerful and automated, yet cost effective colour management system that works seamlessly with the HP embedded spectrophotometer¹. It enables an easy-to-use yet sophisticated end-to-end calibrated and colour managed workflow that saves you time, money and from the hassle of off-line measurement devices. Also included in the box is a monitor calibrator.



Additional 24-inch and 44-inch spindles enable professional photo and graphic designers to easily switch between media rolls. Also available, for design professionals such as architects, engineers, and GIS specialists, is an additional 44-inch spindle for easy switching between technical media rolls.



¹ With i1 colour technology.

² Display permanence rating by Wilhelm Imaging Research, Inc. on a range of HP creative and specialty media. For details: <http://www.hp.com/go/supplies/printpermanence>

³ Availability of media varies according to countries.

HP Designjet Z2100 Photo Printer series

Technical specifications

Print speed	Best: Up to 9.8 min/page, D/A1 colour image on coated paper, up to 15 min/page, D/A1 colour image on glossy paper; Normal: Up to 4.2 min/page, D/A1 colour image on coated paper, up to 7.9 min/page, D/A1 colour image on glossy paper; Draft: 2.0 min/page, D/A1 colour image on coated paper 5.8 min/page, D/A1 colour image on glossy paper
Resolution	Best: 2400 x 1200 optimised dpi; Normal: 600 x 600 dpi; Draft: 600 x 600 dpi
Memory	128 MB Standard memory, 40 GB hard disk
Media	Handling: Sheet feed, roll feed, automatic cutter (cuts all media except canvas); Types: Photographic paper (satin, gloss, semi-gloss, matte), proofing paper (high-gloss, semi-gloss, matte), fine art printing material (canvas, smooth, textured, watercolour), self-adhesive and vinyl (polypropylene, vinyl), sign and banner (display film, banner, scrim, polypropylene, Tyvek [®] , outdoor paper), backlit, bond and coated (bond, coated, heavyweight coated, super heavyweight coated); Maximum weight: 500 g/m ² ; Size: HP Designjet Z2100 24-inch Photo Printer: All standard sizes larger than Letter/A4 up to 609 mm (24 inches) wide, HP Designjet Z2100 44-inch Photo Printer: All standard sizes larger than Letter/A4 up to 1117.6 mm (44 inches wide); Maximum external roll diameter: 140 mm (5.11 inches); Maximum roll length: 91 m (300 ft)
Printing	Margins: Roll—5 x 5 x 5 x 5 mm (0.2 x 0.2 x 0.2 x 0.2 inches) (full bleed available on glossy roll media); Sheet: 5 x 5 x 5 x 14 mm (0.2 x 0.2 x 0.2 x 0.55 inches); Technology: HP Viverna pigment inks, HP Three-Black ink set; Print cartridge colours: Light cyan, light magenta, light grey, photo Black, cyan, magenta, yellow, matte black; Ink types: HP Viverna pigment inks; Ink drop: 4 pl (light cyan, light magenta, light grey, photo black), 6 pl (cyan, magenta, yellow, matte black); Ink cartridge size: 130 ml ink cartridges, 130 ml Ink Cartridge Twin Packs; Nozzles: 2 colours per printhead, 1056 nozzles per colour; Maximum print length: 9140 mm (359.8-inch) (OS and application dependent); Line accuracy: +/- 0.2 %; Lightfastness: Over 200 years ² fade resistance; Waterfastness: Water-resistant on a range of HP creative and speciality media; Connectivity: Standard—1 10/100 BT Ethernet, 1 USB 2.0 high-speed certified port, 1 EIO Jetdirect accessory slot, Optional—HP Jetdirect EIO print certified; Print languages: Standard—HP PCL3GUI, Optional—PS via optional software RIP, HPGL2/RTL optional software solution
Image quality	Colour accuracy: Median <1.6 dE2000, 95% of colours <2.8 dE2000 ³ ; Short term colour stability: <1 dE2000 in less than 5 minutes ⁴ ; Long term print-to-print repeatability: Average <0.5 dE2000, 95% of colours <1.4 dE2000 ⁵ ; Maximum optical density: 4 L*/2.4 D ⁶
Recommended system requirements	Macintosh: Apple Mac OS X 10.2 or above—Mac G5, 1GB RAM, 2 GB available hard disk; Windows: Microsoft Windows XP or 2000—Pentium IV, 3 GHz, 1GB RAM, 2 GB available hard disk
Dimension (w x d x h)	Printer: HP Designjet Z2100 24-inch Photo Printer—1262 x 732 x 391 mm (49.7 x 28.8 x 15.4 inches); Printer with stand: HP Designjet Z2100 44-inch Photo Printer—1770 x 732 x 1047 mm (69.7 x 28.8 x 41.2 inches); Shipping Dimensions: HP Designjet Z2100 24-inch Photo Printer—1660 x 770 x 590 mm (65.35 x 30.3 x 23.2); HP Designjet Z2100 44-inch Photo Printer—1960 x 775 x 600 mm (77.2 x 30.5 x 23.6 inches)
Weight	Printer: HP Designjet Z2100 24-inch Photo Printer—47 kg (103.6 lb); Printer with stand: HP Designjet Z2100 44-inch Photo Printer—86 kg (189 lb); Shipping weight: Printer: HP Designjet Z2100 24-inch Photo Printer—88.5 kg (195 lb); Printer with stand: HP Designjet Z2100 44-inch Photo Printer—123 kg (271 lb)
What's in the box	HP Designjet Z2100 24-inch Photo Printer: spindle, printheads (4 x 2 colours), ink cartridges (8 x 69 ml) ⁷ , media high gloss photo sample roll (24-inch x 15 ft), rear tray (24-inch), adaptor 3-inch KIT for spindle (2), quick reference guide, set-up poster, USB cable, power cord; HP Designjet Z2100 44-inch Photo Printer: spindle, technical spindle, printheads (4 x 2 colours), ink cartridges (8 x 130 ml), media high gloss photo sample roll (36-inch x 15 ft), stand (44-inch), rear tray (44-inch), 3-inch KIT for spindle (2), quick reference guide, set-up poster, USB cable, power cord
Environmental ranges	Maximum operating temperature: 5 to 40° C (41 to 104° F); Recommended operating temperature: 15 to 35° C (59 to 95° F); Storage temperature: -25 to 55° C (-13 to 131° F); Recommended operating humidity: 20 to 80% RH; Recommended storage humidity: 0 to 95% RH
Acoustic	Sound pressure, active: 44 dB(A); Sound pressure standby: 29 dB(A); Sound power active: 6.5 B(A); Sound power, standby: 4.4 B(A)
Power consumption	Active: 200 watts; Maximum: 200 watts; Powersave: 27 watts; Standby: 43 watts; Power requirements: Input voltage auto-ranging 100 to 240 VAC (+/- 10%), 50/60 Hz (+/- 3 Hz), 2 amp max
Certification	Safety: IEC 60950-1 compliant, EU LVD and EN 60950-1 compliant, certified by CSA for Canada and US, Argentina IRAM, Singapore PSB, Russia GOST, China CCIB, Taiwan BSMI; Electromagnetic: Compliance for Class B products—EU (EMC Directive), USA (FCC rules), Canada (DoC), Australia (ACA), New Zealand (MoC), China (CCC), Japan (VCCI), Korea (MIC) and Taiwan (BSMI); Energy Star[®] compliant: Yes; Press standard: 100% coverage of SWOP and ISO
Services	Warranty: One-year next-business-day exchange (Australia and New Zealand), one-year next-business-day on-site repair (JP, AP except Australia and New Zealand)

¹ Available from December 2006.

² Display permanence rating by Wilhelm Imaging Research, Inc. on a range of HP creative and speciality media. For details: <http://www.hp.com/go/supplies/printpermanence>

³ ICC Absolute Colorimetric accuracy on HP Premium Instant Dry Photo Satin, HP Hahnemühle Smooth Fine Art paper, HP Professional Semi-Gloss Contract Proofing paper, HP Proofing Matte.

⁴ With HP Premium Instant Dry Photo Satin media.

⁵ With HP Premium Instant Dry Photo Gloss media.

⁶ Replacement ink cartridges available are HP 70 130 ml Ink Cartridges and HP 70 130 ml Ink Cartridge Twin Packs.

⁷ For more information, visit www.hp.com/go/pageyield

For more information on products, technologies and services available, visit www.hp.com/go/graphic-arts



© 2006 Hewlett-Packard Development Company, L.P.

The information contained herein is subject to change without notice. The only warranties for HP products and services are set forth in the express warranty statements accompanying such products and services. Nothing herein should be construed as constituting an additional warranty. HP shall not be liable for technical or editorial errors or omissions contained herein.

Printed in Singapore, 200030216EEP, September 2006 (Rev 1)

Ordering information

Product	HP Designjet Z2100 24-inch Photo Printer
Q6675A	HP Designjet Z2100 44-inch Photo Printer
Q6677A	
Accessories	
Q6663A	HP Designjet Z2100 24-inch stand
Q6692A	HP GL/2 Upgrade Kit for the HP Designjet Z2100 Photo Printer series
Q6643D	EFI Designer Edition 5.1 for HP XL International
Q6644D	EFI Designer Edition 5.1 for HP XL Japan
Q6701A	HP Advanced Profiling Solution
Q6698A	HP Designjet Z2100 44-inch spindle for printing on technical media (spare spindle for easy media switching)
Q6699A	HP Designjet Z2100 44-inch spindle for graphics (spare spindle for easy media switching)
Q6700A	HP Designjet Z2100 24-inch spindle for graphics (spare spindle for easy media switching)

Printing supplies

Printheads

C9404A	HP 70 Matte Black & Cyan Printhead
C9405A	HP 70 Light Magenta & Light Cyan Printhead
C9406A	HP 70 Magenta & Yellow Printhead
C9407A	HP 70 Photo Black & Light Gray Printhead

130 ml ink cartridges

C9448A	HP 70 Matte Black 130 ml Ink Cartridge
C9449A	HP 70 Photo Black 130 ml Ink Cartridge
C9451A	HP 70 Light Gray 130 ml Ink Cartridge
C9452A	HP 70 Cyan 130 ml Ink Cartridge
C9453A	HP 70 Magenta 130 ml Ink Cartridge
C9454A	HP 70 Yellow 130 ml Ink Cartridge
C9455A	HP 70 Light Magenta 130 ml Ink Cartridge
C9390A	HP 70 Light Cyan 130 ml Ink Cartridge

Ink cartridge twin packs

CB339A	HP 70 Matte Black 130 ml Ink Cartridge Twin Pack
CB340A	HP 70 Photo Black 130 ml Ink Cartridge Twin Pack
CB342A	HP 70 Light Gray 130 ml Ink Cartridge Twin Pack
CB343A	HP 70 Cyan 130 ml Ink Cartridge Twin Pack
CB344A	HP 70 Magenta 130 ml Ink Cartridge Twin Pack
CB345A	HP 70 Yellow 130 ml Ink Cartridge Twin Pack
CB346A	HP 70 Light Magenta 130 ml Ink Cartridge Twin Pack
CB351A	HP 70 Light Cyan 130 ml Ink Cartridge Twin Pack

Media supplies

Q8759A	HP Professional Satin Photo Paper 610 mm x 15.2 m (24 inches x 50 ft)
Q7991A	HP Premium Instant-Dry Gloss Photo Paper 610 mm x 22.9 m (24 inches x 75 ft)
Q7992A	HP Premium Instant-Dry Satin Photo Paper 610 mm x 22.9 m (24 inches x 75 ft)
Q6626A	HP Super Heavyweight Plus Matte Paper 610 mm x 30.5 m (24 inches x 100 ft)
C6029C	HP Heavyweight Coated Paper 610 mm x 30.5 m (24 inches x 100 ft)
Q8708A	HP Collector Satin Canvas 610 mm x 6.1 m (24 inches x 20 ft)
Q8710A	HP Collector Satin Canvas 1067 mm x 15.2 m (42 inches x 50 ft)
Q8704A	HP Artist Matte Canvas 610 mm x 6.1 m (24 inches x 20 ft)
Q8706A	HP Artist Matte Canvas 1067 mm x 15.2 m (42 inches x 50 ft)
Q8712A	HP Universal Matte Canvas 610 mm x 6.1 m (24 inches x 20 ft)
Q8714A	HP Universal Matte Canvas 1067 mm x 15.2 m (42 inches x 50 ft)

For more information, call your local Hewlett-Packard sales office or your nearest HP authorised dealer:

HP customer information centre (for product information)

Australia	13 23 47
China	800 820 2255
Hong Kong	800 93 8855
India	1600 425 4999 (from MTNL/BSNL LAN line) 3030 4499 (from mobile)
Indonesia	0800 1111 222
Korea	080 703 0700
Malaysia	1800 88 5880
New Zealand	0800 733 547
Philippines	1800 1441 6688
Singapore	1800 278 8100
Taiwan	0800 236 686
Thailand	+662 353 9000
Vietnam	+848 930 2814

HP customer care centre (for post-sales service)

Australia	13 10 47
China	800 810 3888
Hong Kong	+852 3002 8555
India	1600 112 267
Indonesia	+62 21 350 3408
Korea	1588 3003
Malaysia	1800 88 5888
New Zealand	0800 449 553
Philippines	+63 2 867 3551
Singapore	+65 6 272 5300
Taiwan	+886 2 8722 8000
Thailand	+662 353 9000
Vietnam	+848 823 4530

For the following countries, please fax your queries to: +65 6275 6707

• Bangladesh • Bhutan • Brunei • Cambodia • Maldives • Nepal
• Pakistan • Sri Lanka

